



**flow technology™**

**Biopharma  
Capabilities**

2022

# Who we are:

 **40+**  
Years  
In Business

 **1000+** Turnkey  
Projects

 **3,600m<sup>2</sup>**  
Office & Workshop  
Space

 **ISO 9001**  
&  
**ISO 45001**  
Certified



# Who we work with:

**8/10**  
World's Largest  
Bio Pharma  
Companies

**Top 2**  
World's Largest  
Soft Drinks  
Companies

**3/4**  
World's Top  
Alcoholic Beverage  
Producers

**Top 3**  
Irish Dairy  
Processors



 Reference Sites Across  
Ireland, Belgium, Spain  
& the Netherlands

 Collaboration with  
EPCs and direct to  
End Users

 Trusted by:  
8 of World's Top 10  
Biotech Companies.

 7 ISPE FOYA  
Category  
Winning Projects

# BioPharma System Expertise

Clean-In-Place



(Depth, Harvest, Viral,  
Nano, TFF/UFDF)

Filtration



Chromatography  
Liquid Handling



Buffer  
Dilution &  
Distribution



High Temperature  
Short Time



Upstream

Primary Capture

D/S & Purification

Fill Finish

Utilities

WFI & PW  
Distribution & POU



Transfer Panels



TCUs



Biowaste  
Deactivation &  
Neutralisation



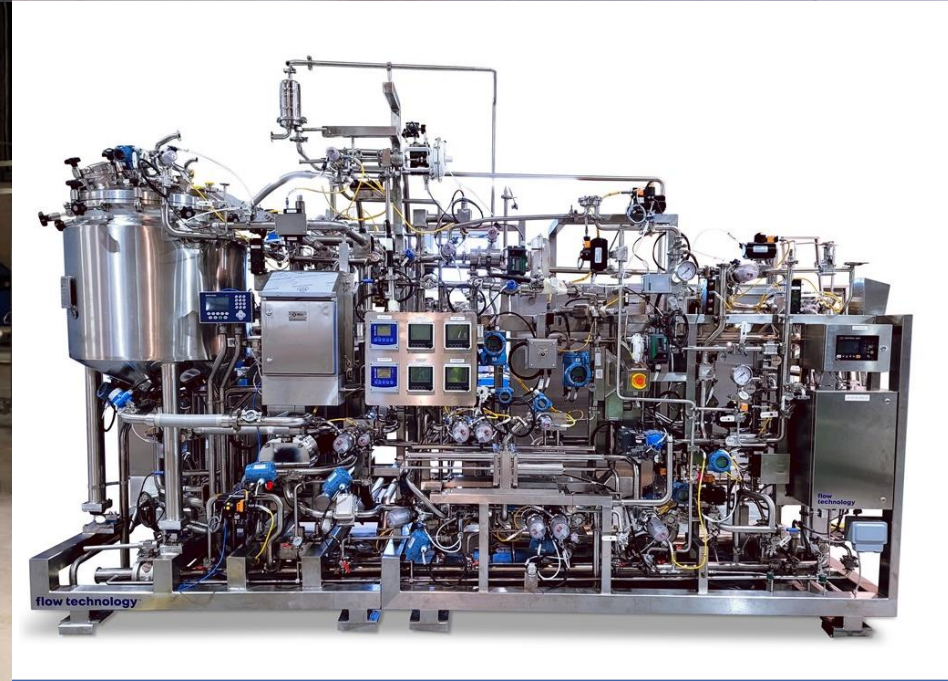
Single Use



# Filtration System Capabilities

## Technology Expertise

- Nano Filtration
  - Depth & Harvest Filtration
  - POD Filtration
  - Viral Filtration
  - TFF/Ultrafiltration Diafiltration
- 
- Experience and expertise with multiple manufacturers of filters and media.
  - Fully customized solutions to match customer process, ergonomics and site considerations
  - Full FAT (Including SIP) capabilities at our state-of-the-art facility





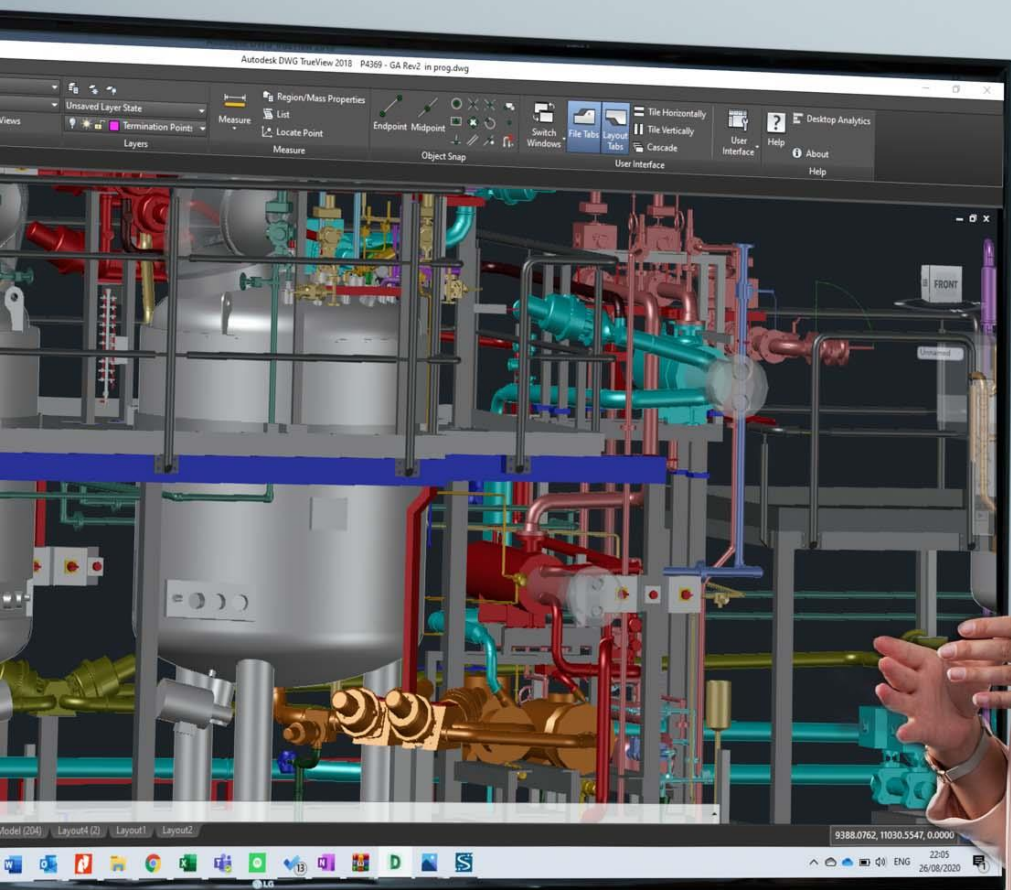
# Chromatography Liquid Handling Skid System Capabilities

## Technology Expertise

- Every Chromatography skid is unique and we work with clients to design, build and test a system to meet their requirements.
- Many of our Chromatography skids integrate inline dilution
- Experience ranging from small refrigerated systems to large systems feeding 2.4m diameter columns

## Equipment & Platform Flexibility

- Experience and expertise with many manufacturers of equipment and components. We incorporate the customer's preferred equipment.



## Full Project Scope Capabilities

- Process Design
  - P&IDs, HAZOP, GAs, BOMs, Equipment Specifications, Layouts, URS (With Client), Automation & Electrical Scoping
- Commercial Proposals
  - Front End & Budget
  - Fixed price Lump Sum
  - Time & Material
- Project Management
- Detailed Design
- Quality Control
- Factory & Site Testing
- Handover Documentation
- Operator & Technician Training
- After Sales Support

**Thank You.**

**David Greer**  
Engineering Director  
[dgreer@flowtechnology.ie](mailto:dgreer@flowtechnology.ie)  
**+353 87 6860405**

**Ian Shanahan**  
Business Development Manager  
[ishanahan@flowtechnology.ie](mailto:ishanahan@flowtechnology.ie)  
**+353 83 428 3994**

**flow**  
**technology™**

Railway Road, Charleville,  
Co. Cork, Ireland.  
P56 XY64