



2021 Honorable Mention
Raymond G. Perelman Center for Cellular and Molecular Therapeutics
Philadelphia, PA, USA



2020 Social Impact
United Therapeutics - Dinutuximab-Dedicated Oncology Medical and Analytical Lab
Silver Spring, MD, USA



2020 Facility of the Future
Sanofi - Digitally Enabled Integrated Continuous Biomufacturing Facility
Framingham, MA, USA



2015 Honorable Mention
Pharmalucence - Aseptic Fill/Finish Facility EPCMV
Billerica, MA, USA



2011 Facility Integration
Merck - Global Clinical Supplies Manufacturing, Packaging and Warehouse Expansion
Summit, NJ, USA



2008 Equipment Innovation
BMS - Clinical Supplies Manufacturing and Drug Product Technology Expansion
New Brunswick, NJ, USA

2022 Honorable Mention
Iovance - Therapeutics Clinical & Commercial Facility
Philadelphia, PA, USA



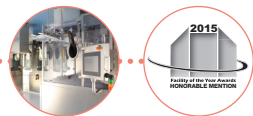
2021 Honorable Mention
Locus Biosciences - CGMP CRISPR Facility
Research Triangle Park, NC, USA



2020 Honorable Mention
Janssen - CAR-T Clinical Manufacturing Facility
Raritan, NJ, USA



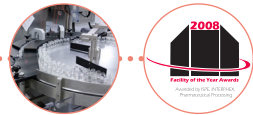
2017 Equipment Innovation
Cook Pharmica - Flexible Filling Line
Bloomington, IN, USA



2012 Project Execution
Eisai - Knowledge Centre
Vizag, AP, India



2010 Operational Excellence
Biogen Idec - LSM Facility Upgrade, Phase II
Research Triangle Park, NC, USA



Local & Global Locations

Pennsylvania
(Headquarters)
Blue Bell
+1 610.828.4090

California
Irvine
+1 949.679.4682

San Francisco
+1 415.748.8753

Kansas
Overland Park
+1 913.345.9084

Maryland
Germantown
+1 240.839.3620

Massachusetts
Chelmsford
+1 978.954.5450

New Jersey
Somerset
+1 732.748.1990

Cherry Hill
+1 856.395.0400

North Carolina
Morrisville
+1 919.460.6636

Canada
Toronto
+1 647.361.2270

Vancouver
+1 877.879.3367

United Kingdom
Birmingham
+44 121 289 3471

Switzerland
Basel
+41 61 205 09 90

Ireland
Dublin
+353 1 4854246

Germany
Frankfurt & Nürnberg
+49 (0) 172 5771827

Brazil
São Paulo
+55 11 3157-2727

Singapore
+65 6662 9370

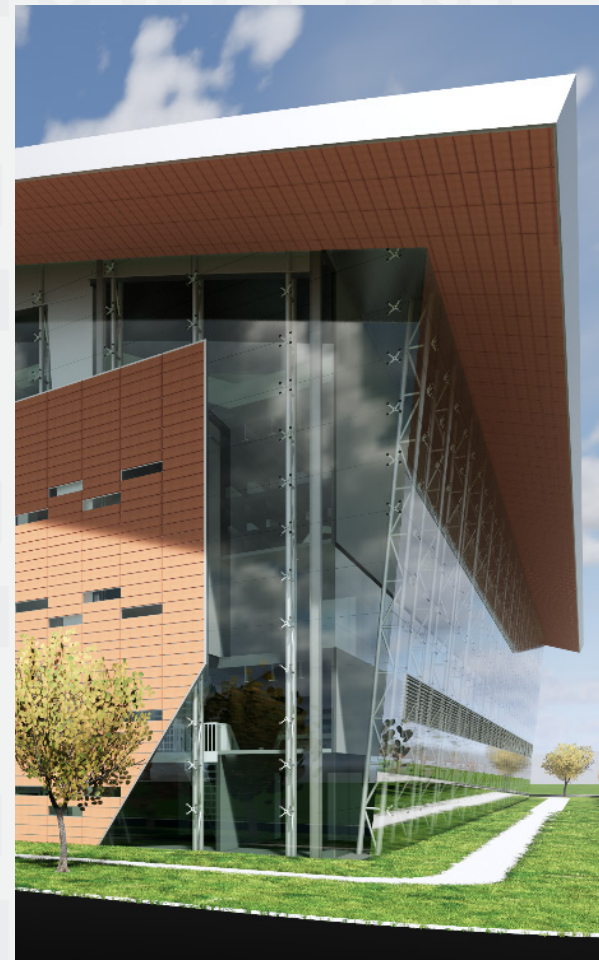
India
Mumbai
+91 022 6720 9717

Vadodra
+91 079 2640 1711

New Delhi
+91 011 2577 7806



Delivering Technically Complex Facilities for the Life Sciences Industry Around the Globe



About IPS

IPS is a global leader in developing innovative business solutions for the biotechnology and pharmaceutical industries. Through operational expertise and industry-leading knowledge, skill, and passion, IPS provides technical consulting, architecture, engineering, project controls, construction management, and CGMP compliance services for technically complex life sciences development and manufacturing facilities worldwide. With the newest acquisition of Linesight, IPS has over 3,000 professionals in 45+ offices across 17 countries in the Americas, Europe, Asia Pacific, Southeast Asia, Australia, and the Middle East. Linesight specializes in cost, schedule, risk, program, and project management services in various market sectors, including data centers, life sciences, and high-tech industrial.



Founded in 1989



45+ Offices in 17 Countries and Growing



Biotech and Pharma Industry Focused



Projects range from \$1,000 to \$1.5B



Over 3,000 Experienced Professionals



Internationally Known Subject Matter Experts



Many Employees Come from Client Sites



Best-in-class Technical Expertise



Global Regulatory Knowledge



Trained 650+ FDA Inspectors



Incident and Injury-free Safety Culture



"A" Safety Conformance Rating

in f
www.ipsdb.com | 888.366.7660

Knowledge, Skill & Passion



**Advanced Aseptic Filling /
Barrier Technologies**



**API / Small Molecule
Manufacturing**



Biomanufacturing / Vaccines



Oral Solid Dosage



**Potent Compounds /
Containment**

Integrated by Name, Designed and Constructed for Compliant Product Delivery

IPS' primary focus is in life sciences, including pharmaceuticals, biomanufacturing, animal health, medical devices, science and technology, and the consumer goods industry. Focusing on these few select industries allows us to hone our technical expertise. We have the largest number of industry-recognized Subject Matter Experts (SMEs), many with owner-side operational experience, in various fields of the life sciences industry.

Knowing the underlying technology, industry trends, regulatory environment, and manufacturing processes enables our experts to identify opportunities to streamline production and maximize efficiency. Our experts provide knowledge-driven solutions that utilize cutting-edge technologies and applications.

Agile to Deliver Your Projects How and Where You Need Them to be Delivered

We are a pioneer in the application of single-source, integrated EPCMV services for technically complex facilities. We have developed, implemented, and refined a lean delivery model that addresses the entire project life cycle that focuses on design quality and effectively controls costs and schedule. We add value by minimizing risk, reducing the duration from decision to delivery, and streamlining activities from concept through design, construction, and commissioning and qualification.

While our projects vary in size and scope, from concept studies through world-scale manufacturing campuses, our team of technical experts and seasoned design, engineering, compliance, and construction professionals devote the same high level of Knowledge, Skill & Passion to each project.

A Depth of Services for All Your Project Needs from Concept through Validation

Consulting

Our technical and SMEs review and analyze your needs, offering effective business solutions to help deliver your project and achieve your business objectives.

Engineering / Architecture

Our engineers and architects have the depth of experience and knowledge across a broad spectrum of industry trends to deliver optimal project outcomes.

Project Controls

We integrate the people, business processes, systems, and tools used to effectively: plan the project, forecast the cost, understand and execute the schedule, minimize risk, and exceed the client's expectations.

Construction Management

As technical builders with experience spanning the entire project execution life cycle, we specialize in complex facilities in hi-tech and highly regulated industries.

Commissioning, Qualification & Validation

We offer a comprehensive approach to understanding the regulations and requirements of working within the CQV life cycle to ensure the consistency and quality of the manufactured product.

Staffing Services

We offer cost-effective staffing solutions for capital projects and staff augmentation focused on industry professionals including engineers, project managers, construction managers, and compliance professionals.



**Scale-up /
Tech Transfer**



Critical Utilities



Utilities Design



Laboratories / Vivariums



**Risk-based Commissioning &
Qualification**