

SCI LLIGENCE

Innovating Life Science Informatics



Welcome to Scilligence, where *innovation* meets informatics to unlock the full potential of scientific research.



Our mission is to empower organizations across pharmaceuticals, biotechnology, academia, and government agencies with cutting-edge solutions that streamline R&D processes, drive innovation, and pave the way for scientific discoveries.

At Scilligence, we provide a versatile platform built on a foundation of our robust chem and bioinformatics tools and over a decade of experience working with scientists to digitize and streamline their workflows. Because our software combines the structure and ease of use of a SaaS product with the power and flexibility of a customized solution, we can fill a wide range of informatics needs. Our applications and services scale as your organization grows from small startup to multinational corporation. Join the Scilligence community, where we are constantly innovating to meet the changing needs of the life sciences R&D landscape.

Our Value Proposition

At Scilligence, we provide a versatile and tailored scientific informatics platform designed to foster collaboration, boost productivity, facilitate data-driven decision-making, and ensure robust compliance and data security. Through the utilization of our integrated toolset, organizations can optimize their R&D workflows, expedite innovation, and propel scientific discoveries forward.



Flexible and Integrated Platform

Streamline your research journey with the Scilligence platform's integrated apps, customizable to your needs and compatible with third-party software through RESTful APIs.



Native Chem and Bioinformatics Capabilities

Our platform is built on chemistry and bioinformatics, featuring our JSDraw sketcher for small molecules and biologics.



Register and Track Any Entity and Its Data

Effortlessly register and track a wide range of chemical and biological entities with our platform's robust uniqueness check algorithms.



Personalized Technical Support

Enjoy personalized support from our region-specific technical support experts and dedicated CSM team members.

Meet Your Next Laboratory Companions

We have harnessed the power of informatics to create a versatile, tailored platform that transforms the way research is conducted.



ELN: Having trouble tracking down archived experiments?

Simplify many of the tasks associated with data management by using a flexible web platform that allows you to quickly search and filter through unstructured data.



RegMol: Losing track of your data across dozens of spreadsheets?

Register a variety of entities while enabling the centralized management of protocols and assay data.



Inventory: Devoting too many resources to inventory management?

Manage your unique entities, reagents, and stockroom R&D materials.



PMF: Trying to manage projects and deadlines via email?

Effectively manage workflows and project timelines with our easy-to-deploy collaboration platform featuring essential security controls, seamless document sharing, and robust data mining capabilities.



SDMS: Spending too much time gathering data and writing reports?

Provides a centralized data storage solution able to integrate with a wide variety of instruments and devices, allowing scientists to have fast, secure access to the data they need.



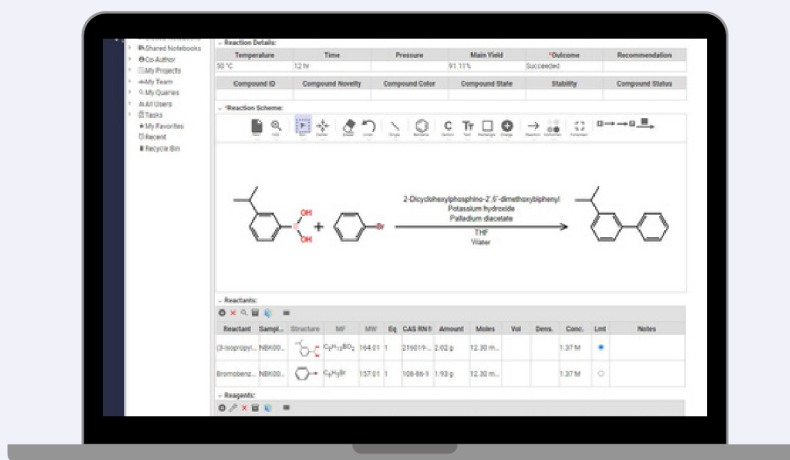
FOCUS

Elevate your research with the Scilligence FOCUS module, which provides an intuitive and interactive solution for streamlined chemical and biological data analysis.



Electronic Lab Notebook

Scilligence ELN is a unified informatics platform that supports R&D effort across all scientific branches focusing on small molecules, mRNA, ADCs, DEL, and more.



Our ELN provides an elegant solution to macromolecule work by leveraging the most advanced HELM implementations. With its purposeful design the Scilligence ELN is a platform that will help your lab elevate internal and external collaborative processes.

Major Features

- Large selection of user-vetted experiment templates
- Proprietary indexing capabilities enable structure, HELM, and biosequence queries
- Seamless integration with registration, inventory, and assay data warehouse
- Proprietary informatics engine enables advanced HELM functionality and enhanced stereochemistry
- Auto-extract information from flat files via our Data Reader technology for efficient data capturing and processing

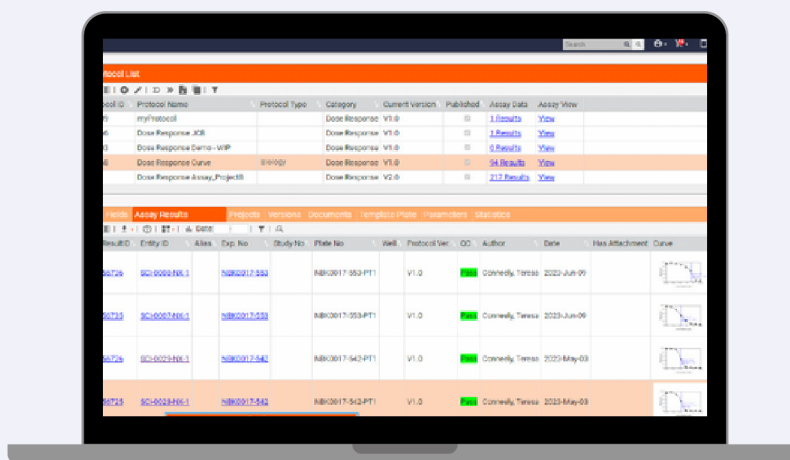
Benefits

- Eliminate data silos by building teams or projects with secure data-sharing
- Capture and share data securely in real time
- Facilitate data-driven decisions by utilizing machine-readable knowledge base
- Generate reports rapidly for publications or patent write ups
- Enable quick and efficient deployment with zero client - cloud or on-prem



RegMol

Scilligence RegMol is an entity registration and bioassay database which supports all entities.



Our comprehensive and easy-to-deploy platform enables centralized management of protocols and assay data to support all research and development collaborations. RegMol empowers data driven decisions through our powerful data mining analytics including query by chemical structure, HELM and biosequences.

Major Features

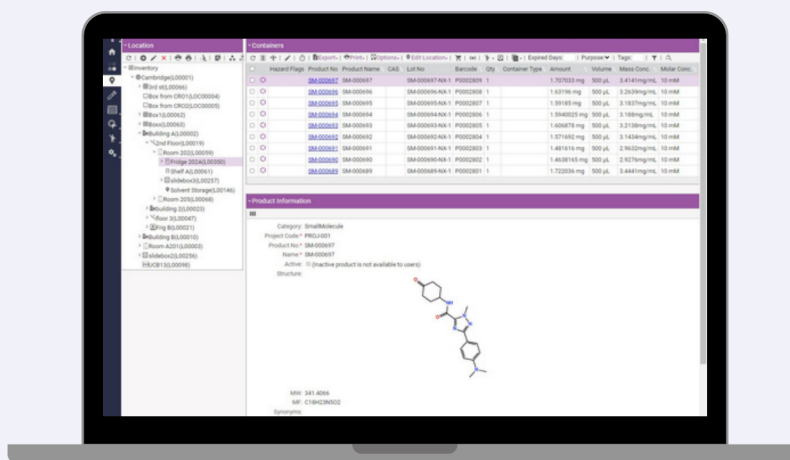
- Generate corporate IDs and aliases with uniqueness check
- Register a variety of entities including antibodies, ADCs, mRNA, and LNP
- Standardize, register and implement assay protocols
- Map flat or active documents efficiently via our Data
- Reader for bulk entity registration and data import
- Create a data lake encompassing all registration and assay data.

Benefits

- A single system to support all entities
- The most advanced implementation of HELM
- Advance query by chemical structure, HELM and biosequence.
- Create custom assay views
- Manage a genealogy network of registered entities
- Seamless integration with ELN, Inventory, and FOCUS

Inventory

Scilligence Inventory utilizes our chem and bioinformatics capabilities for your R&D materials.



Powerful structure/sequence search, tracking, and location/shipment management capabilities allow you to manage workflows efficiently. Inventory is cross-platform, customizable, and easy to integrate with Electronic Lab Notebook and registration systems.

Major Features

- Manage a broad range of sample types
- Create stock solutions from dry powder and create plates using our plate management system
- Customizable location management and barcode system
- Alert mechanisms: low stock, CoA expiration, critical API shortage

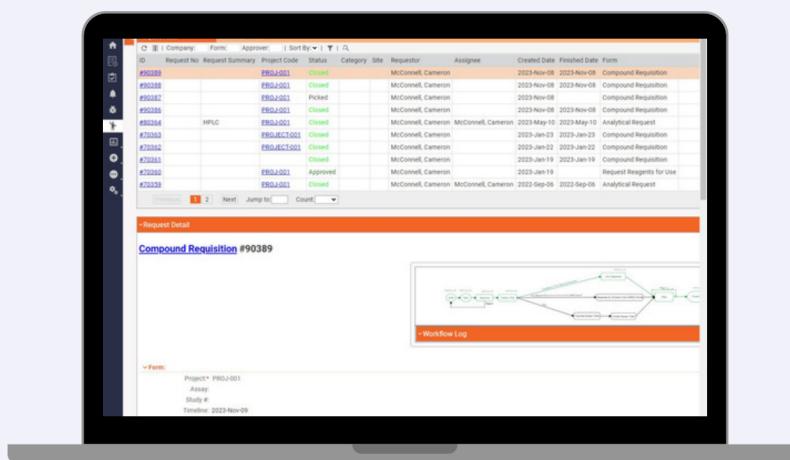
Benefits

- Streamline data management in a centralized manner
- Improve productivity and reduce costs
- Exchange and reuse metadata efficiently
- Regulatory compliance



Project Management Framework

Scilligence PMF is a centralized workflow management system that strengthens collaboration between teams by creating requests and automatic notifications.



It has been commonly deployed as a master workflow engine where administrators can stitch together raw data, reports, informatics modules, and databases. PMF comes with Scilligence's powerful indexing and query technology allowing the end user to develop transparent and well-defined actionable tasks.

Major Features

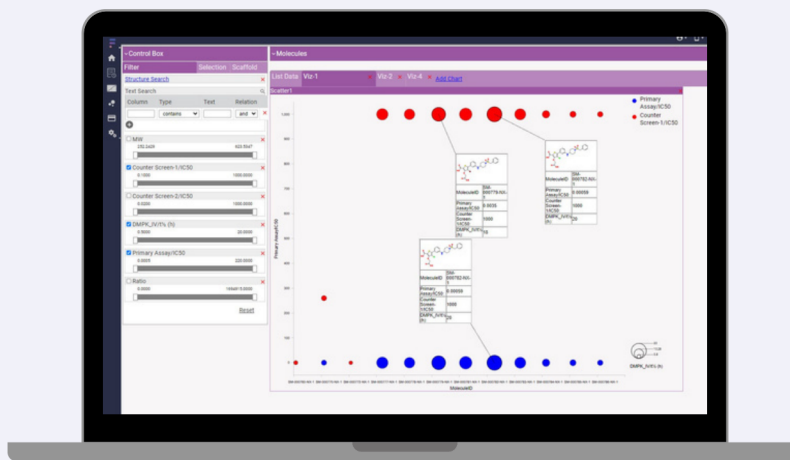
- Design and build custom workflows with defined approvals and task assignments
- Manage internal and external requests
- Automate notifications and reminders
- Query by request ID, keyword, chemical structure, HELM, and bio-sequence
- Track every action and result tied to each request

Benefits

- Centralize request management
- Align internal and external teams via collaborative workflows
- Facilitate data exchange with built-in business logic and approval points
- Pull and push information automatically from numerous data sources
- Create customized workflows to automate multi-step processes

FOCUS

Scilligence FOCUS provides an intuitive and interactive way to analyze complex sets of chemistry and biology data.



FOCUS utilizes an adaptable framework that allows for quick identification of lead molecules, gaps in SAR, and pathways for accelerating drug discovery and development.

Major Features

- Web-based solution
- Integrates with RegMol (Scilligence's registration and assay database)
- Import data from files
- Chemically-aware charting and graphing
- R-group decomposition and gap analysis

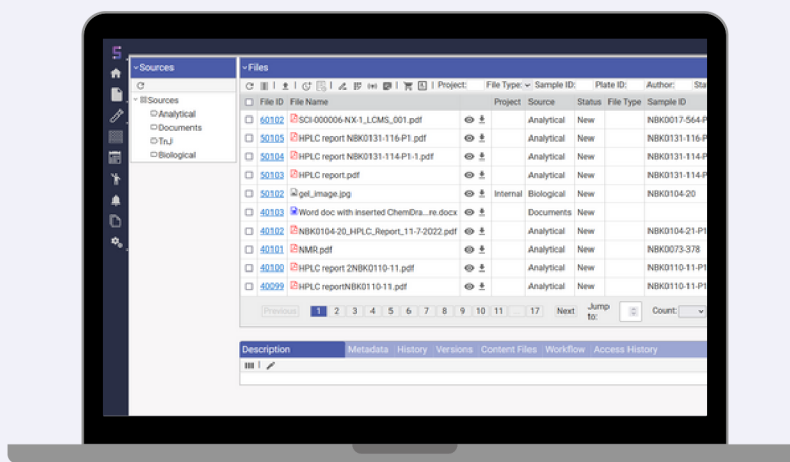
Benefits

- Create custom visualizations for individual or team use
- Visualize all modalities with advanced HELM implementations
- Identify lead molecules easily
- Visualize gaps in SAR quickly
- Accelerate drug discovery programs with intuitive analyses



Scientific Data Management System

Scilligence SDMS is a web-based data management system that can integrate with a wide variety of instruments and devices.



Metadata can be extracted and integrated with other database applications to comply with strict version control and a detailed audit history.

Major Features

- Retrieve data from instruments and equipment automatically
- Extract metadata into a relational database
- Present data intelligently to automate processes
- Chemically-aware charting and graphing
- Document change history and version control

Benefits

- Streamline data management in a centralized manner
- Improve productivity and reduce costs
- Exchange and reuse metadata efficiently
- Regulatory compliance